

Split-Level Home

the Delray



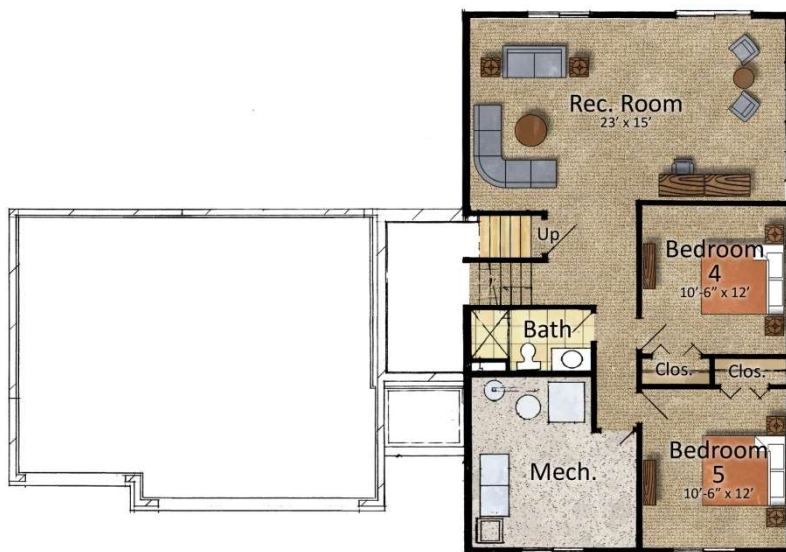
Bedrooms: 3 - 5
Bathrooms: 2 - 3

Finished Sq Ft: 1,301
Unfinished Sq Ft: + 976
Total Sq Ft: 2,277

- 3 Bedrooms on One Level
- Open Floor Concept
- Kitchen Center Island & Pantry
- Private Master Bathroom



Upper Level



Lower Level



www.NobergHomes.com



Seller reserves the right to make changes or modifications to plans, maps, specifications, materials, features, and colors without notice. Prices are subject to changes without notice. Maps, plans, landscaping and elevation renderings are artist's concepts, are not to scale and may not accurately depict the home's or home sites as they are built. These illustrations may depict options and features that are not standard on all homes. Optional features may be included at additional cost and are subject to construction schedule deadlines. All references to square footage are approximate and may vary with elevations. Dimensions and square footage calculations are made using architectural measurements. Home site fencing and walls may not be included in the purchase, and if needed, will vary according to the size and location of the home site. Exterior treatments, window locations and room configurations may vary with elevation. Model interior decorating, landscaping, fencing and other amenities are for display purposes only. Please ask Sales Representatives for complete details. Copyright 2019. Tollberg Homes, LLC. MN Builder License #BC655845. Effective 10/16/2019. Equal Housing Opportunity.